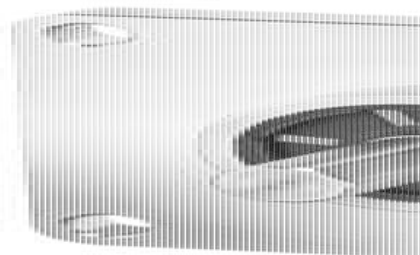


SENDIX 5006/5026 STAL NIERDZEWNA

SERIE 5006

- Średnica zewnętrzna: Ø 58 mm
- Maks. średnica wałka: Ø 10 mm Maks. średnica otworu: Ø 12 mm
- Maks. rozdzielczość: 5000 imp./obr.
- Wyjście: Push-Pull, RS-422
- Materiał obudowy: stal nierdzewna



OPIS PRODUKTU

Enkodery inkrementalne serii Sendix 5006 / 5026 Kübler wykonane w całości ze stali nierdzewnej zapewniają praktycznie bardzo wysoką trwałość. Wysokiej jakości uszczelki, stopień ochrony IP66 / IP67, jak i szeroki zakres temperatur pracy gwarantują wyjątkową szczelność i odporność.

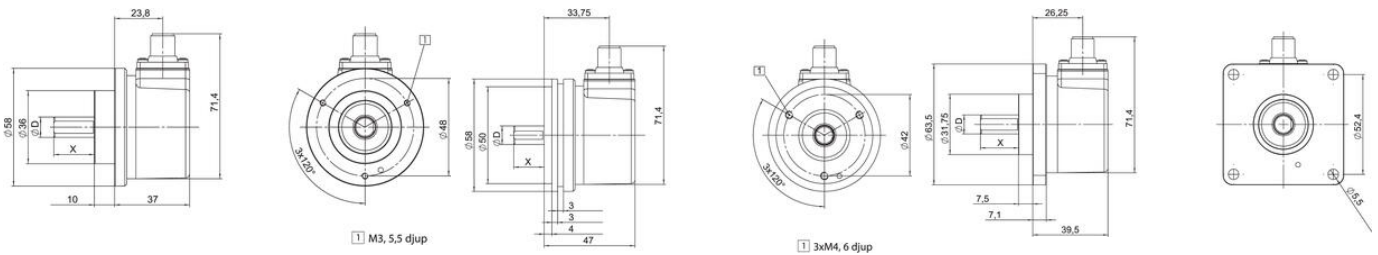
W celu określenia numeru katalogowego proszę o zapoznanie się z poniższymi informacjami.

Order code	8.5006	. XXXX 4 .	XXXX
Shaft version	Type	a b c d	e
a Flange	7 = clamping flange ø 58 mm [2.28"] A = synchro flange ø 58 mm [2.28"] C = square flange □ 63.5 mm [2.5"]	c Output circuit / power supply 2 = push-pull (7272 compatible with inverted signal) / 5 ... 30 V DC 5 = push-pull (with inverted signal) / 10 ... 30 V DC 4 = RS422 (with inverted signal) / 5 V DC	<i>Optional on request</i> - other pulse rates - Ex 2/22 - seawater resistant (stainless steel V4A)
b Shaft (ø x L), with flat	1 = ø 6 x 10 mm [0.24 x 0.39"] 3 = ø 10 x 20 mm [0.39 x 0.79"] 8 = ø 3/8" x 7/8"	d Type of connection 4 = radial M12 connector, 8-pin	<i>Stainless steel V4A as standard types (deliverable as from 1 unit)</i> 8.5006.73X4.XXXX-V4A
		e Pulse rate 1, 5, 10, 12, 36, 100, 200, 250, 256, 360, 400, 500, 512, 600, 800, 1000, 1024, 1200, 2000, 2048, 2500, 3600, 4096, 5000 (e.g. 100 pulses => 0100)	V4A 1.4404

Order code	8.5026	. XXXX 2 .	XXXX
Hollow shaft	Type	a b c d	e
a Flange	1 = with spring element, long C = with stator coupling, ø 63 mm	c Output circuit / power supply 2 = push-pull (7272 compatible, with inverted signal) / 5 ... 30 V DC 5 = push-pull (with inverted signal) / 10 ... 30 V DC 4 = RS422 (with inverted signal) / 5 V DC	<i>Optional on request</i> - other pulse rates - Ex 2/22 - seawater resistant (stainless steel V4A)
b Through hollow shaft	2 = ø 1/4" 4 = ø 3/8" 3 = ø 10 mm [0.39"] 5 = ø 12 mm [0.47"] 6 = ø 1/2" 8 = ø 15 mm [0.59"]	d Type of connection 2 = radial M12 connector, 8-pin	<i>Stainless steel V4A as standard types (deliverable as from 1 unit)</i> 8.5026.18X2.XXXX-V4A
		e Pulse rate 1, 5, 10, 12, 36, 100, 200, 250, 256, 360, 400, 500, 512, 600, 800, 1000, 1024, 1200, 2000, 2048, 2500, 3600, 4096, 5000 (e.g. 100 pulses => 0100)	V4A 1.4404

SPECYFIKACJA TECHNICZNA

Liczba impulsów max	5000
Max. temperatura pracy	85 °C
Min. temperatura pracy	-40 °C
Montaż	Wał
Napięcie zasilania DC max.	30 V DC
Napięcie zasilania DC min.	5 V DC
Podłączenie	Złącze M12
Średnica obudowy	58 mm
Średnica wału max	10 mm
Średnica wału min	6 mm
Stopień ochrony IP	IP66, IP67
Typ czujnika	Inkrementalny
Wersja	Wielobrotowy
Wyjście	Push/Pull, RS422



Terminal assignment

Output circuit	Type of connection	M12 connector, 8-pin
2, 4, 5	5006-4	Signal: 0 V, 1 V, A, X, B, D, S, I
	5006-2	Pin: 1, 2, 3, 4, 5, 6, 7, 8, PH

Top view of mating side, male contact base



M12 connector, 8-pin

0 V: Encoder power supply +V DC
 0 V: Encoder power supply ground GND (0 V)
 A, X: Incremental output channel A
 B, E: Incremental output channel B
 D, S: Reference signal
 PH: Plug connector housing (shield)

Terminal assignment

Output circuit	Type of connection	M12 connector, 8-pin
2, 4, 5	5006-4	Signal: 0 V, 1 V, A, X, B, D, S, I
	5006-2	Pin: 1, 2, 3, 4, 5, 6, 7, 8, PH

Top view of mating side, male contact base



M12 connector, 8-pin

0 V: Encoder power supply +V DC
 0 V: Encoder power supply ground GND (0 V)
 A, X: Incremental output channel A
 B, E: Incremental output channel B
 D, S: Reference signal
 PH: Plug connector housing (shield)