

## SENDIX 3651/3671 MAGNETYCZNY, JEDNOOBROTOWY, ANALOG, Ø36 MM

Enkodery jednoobrotowe absolutne magnetyczne

SERIE 3651



- Średnica zewnętrzna: Ø 36 mm
- Maks. średnica wałka: Ø 8 mm. Maks. średnica otworu: Ø 10 mm
- Maks. rozdzielczość: 12 bitów ST
- Interfejs: 0–10V, 0–5V lub 4–20mA
- Obudowa: kompaktowa metalowa. IP67/IP69K

### OPIS PRODUKTU

Enkodery absolutne jednoobrotowe Sendix 3651 / 3671 Kubler, dostępne są z interfejsem analogowym, wieloma zakresami pomiarowymi, z wałem lub otworem. Stopień ochrony do IP69K, odporność na wstrząsy i ekstremalne wahania temperatury pozwalają na bezproblemową pracę w warunkach zewnętrznych. Zielona i czerwona dioda LED informują odpowiednio o punkcie referencyjnym oraz o wystąpieniu alarmu. Enkodyery te posiadają autoryzację E1 Niemieckiego Federalnego Urzędu Transportu Drogowego (German Federal Motor Transport Authority).

W celu określenia numeru katalogowego proszę o zapoznanie się z poniższymi informacjami.

<b>Order code</b>	<b>8.3651</b>	.	<b>2</b>	<b>X</b>	<b>X</b>	<b>X</b>	<b>X</b>	.	<b>X</b>	<b>X</b>	<b>X</b>	<b>X</b>
<b>Shaft version</b>	Type		a	b	c	d	e	f	g	h		

<p><b>a Flange</b>  <b>2 = synchro flange, ø 36 mm [1.42"]</b></p> <p><b>b Shaft (ø x L), with flat</b>  <b>3 = ø 6 x 12.5 mm [0.24 x 0.49"]</b>                  6 = ø 8 x 12.5 mm [0.32 x 0.49"]                  5 = ø 1/4" x 12.5 mm [0.49"]</p> <p><b>c Output circuit <sup>1)</sup></b>  <b>3 = current output</b>  <b>4 = voltage output</b></p>	<p><b>d Type of connection</b>                  1 = axial cable, 1 m [3.28'] PUR                  A = axial cable, special length PUR *)  <b>2 = radial cable, 1 m [3.28'] PUR</b>                  B = radial cable, special length PUR *)                  3 = axial M12 connector, 5-pin                  4 = radial M12 connector, 5-pin</p> <p>*) Available special lengths (connection types A, B):                  2, 3, 5, 8, 10, 15 m [6.56, 9.84, 16.40, 26.25, 32.80, 49.21']                  order code expansion .XXXX = length in dm                  ex.: 8.3651.233A.1311.0030 (for cable length 3 m)</p> <p><b>e Measuring range</b>  <b>1 = 1 x 360°</b>                  2 = 1 x 180°                  3 = 1 x 90°                  4 = 1 x 45°</p>	<p><b>f Interface / power supply</b>  <b>3 = 4 ... 20 mA / 10 ... 30 V DC</b>  <b>4 = 0 ... 10 V / 15 ... 30 V DC</b>                  5 = 0 ... 5 V / 10 ... 30 V DC</p> <p><b>g Option 1</b>  <b>1 = count direction cw <sup>2)</sup></b>                  2 = count direction ccw <sup>3)</sup></p> <p><b>h Option 2</b>  <b>1 = IP67</b>                  2 = IP69k</p> <p><i>Optional on request</i>                  - Ex 2/22 (only for type of connection 3 + 4)                  - surface protection salt spray tested</p>
---	--	--

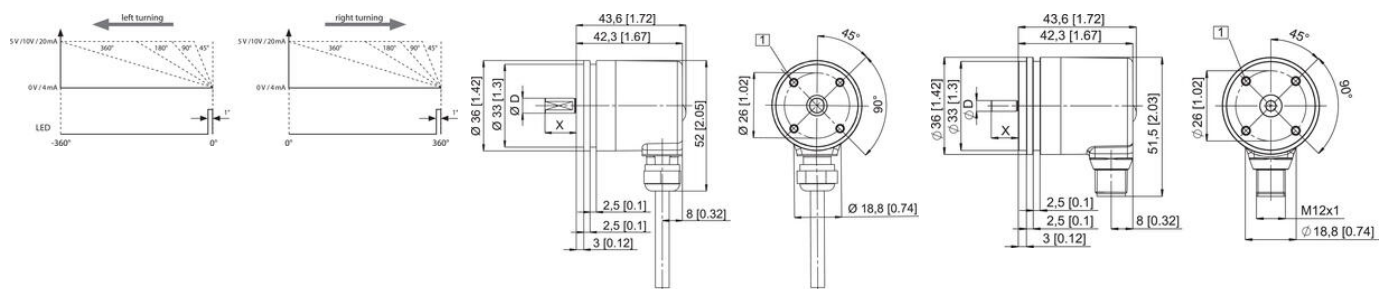
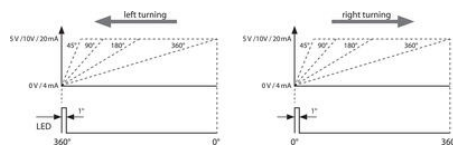
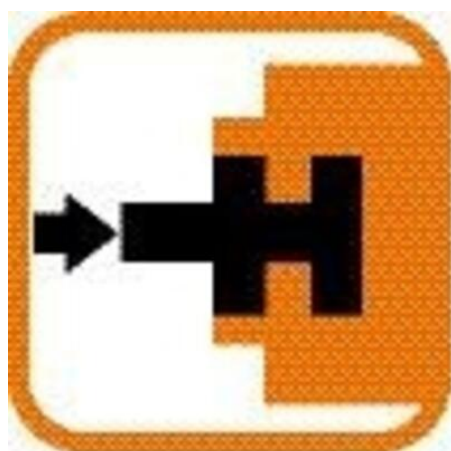
<b>Order code</b>	<b>8.3671</b>	.	<b>X</b>	<b>X</b>	<b>X</b>	<b>X</b>	<b>X</b>	.	<b>X</b>	<b>X</b>	<b>X</b>	<b>X</b>
<b>Hollow shaft</b>	Type		a	b	c	d	e	f	g	h		

<p><b>a Flange</b>                  2 = with spring element, long  <b>5 = with stator coupling, ø 46 mm [1.81"]</b></p> <p><b>b Blind hollow shaft</b>                  (insertion depth max. 18 mm [0.71"])  <b>2 = ø 6 mm [0.24"]</b>                  4 = ø 8 mm [0.32"]                  6 = ø 10 mm [0.39"]                  3 = ø 1/4"</p> <p><b>c Output circuit <sup>1)</sup></b>  <b>3 = current output</b>  <b>4 = voltage output</b></p>	<p><b>d Type of connection</b>                  1 = axial cable, 1 m [3.28'] PUR                  A = axial cable, special length PUR *)  <b>2 = radial cable, 1 m [3.28'] PUR</b>                  B = radial cable, special length PUR *)                  3 = axial M12 connector, 5-pin                  4 = radial M12 connector, 5-pin</p> <p>*) Available special lengths (connection types A, B):                  2, 3, 5, 8, 10, 15 m [6.56, 9.84, 16.40, 26.25, 32.80, 49.21']                  order code expansion .XXXX = length in dm                  ex.: 8.3671.523A.1311.0030 (for cable length 3 m)</p> <p><b>e Measuring range</b>  <b>1 = 1 x 360°</b>                  2 = 1 x 180°                  3 = 1 x 90°                  4 = 1 x 45°</p>	<p><b>f Interface / power supply</b>  <b>3 = 4 ... 20 mA / 10 ... 30 V DC</b>  <b>4 = 0 ... 10 V / 15 ... 30 V DC</b>                  5 = 0 ... 5 V / 10 ... 30 V DC</p> <p><b>g Option 1</b>  <b>1 = count direction cw <sup>2)</sup></b>                  2 = count direction ccw <sup>3)</sup></p> <p><b>h Option 2</b>  <b>1 = IP67</b>                  2 = IP69k</p> <p><i>Optional on request</i>                  - Ex 2/22 (only for type of connection 3 + 4)                  - surface protection salt spray tested</p>
---	--	--

# SPECYFIKACJA TECHNICZNA

Max. temperatura pracy	85 °C
Min. temperatura pracy	-40 °C
Montaż	Wał
Napięcie zasilania DC max.	30 V DC
Napięcie zasilania DC min.	10 V DC
Podłączenie	Kabel, Złącze M12
Średnica obudowy	36 mm
Średnica wału max	8 mm
Średnica wału min	6 mm
Stopień ochrony IP	IP67, IP69K
Typ czujnika	Absolutny
Wersja	Jednoobrotowy
Wyjście	Analogowe



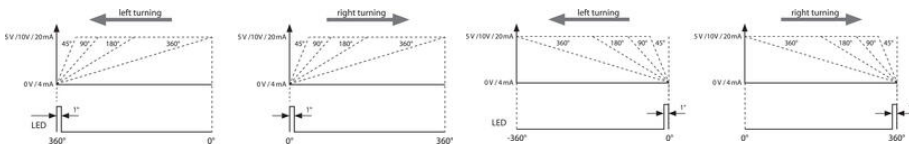
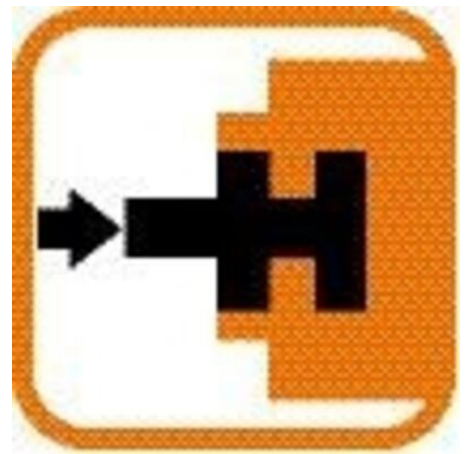
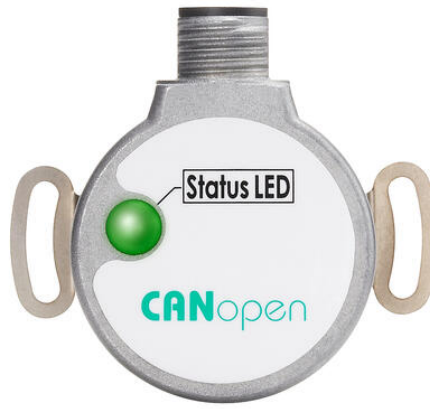
Interface	Type of connection	Cable (isolate unused wires individually before initial start-up)
3 (current)	1, 2, A, B	Signal: D V +V +I -I Cable colour: WH BN GN YE
Interface	Type of connection	M12 connector, 5 pin
3 (current)	3, 4	Signal: D V +V +I -I Pin: 3 2 4 5
Interface	Type of connection	Cable (isolate unused wires individually before initial start-up)
4, 5 (voltage)	1, 2, A, B	Signal: D V +V +I -I Cable colour: WH BN GN YE
Interface	Type of connection	M12 connector, 5 pin
4, 5 (voltage)	3, 4	Signal: D V +V +I -I Pin: 3 2 4 5

+V: Encoder power supply +V DC  
 D V: Encoder power supply ground GND (D V)  
 +I / -I: Voltage + / voltage -  
 +I / -I: Current + / current -

Top view of mating side, male contact base



M12 connector, 5-pin



Interface	Type of connection	Cable (isolate unused wires individually before initial start-up)
3 (current)	1, 2, A, B	Signal: D V +V +I -I Cable colour: WH BN GN YE
Interface	Type of connection	M12 connector, 5 pin
3 (current)	3, 4	Signal: D V +V +I -I Pin: 3 2 4 5
Interface	Type of connection	Cable (isolate unused wires individually before initial start-up)
4, 5 (voltage)	1, 2, A, B	Signal: D V +V +I -I Cable colour: WH BN GN YE
Interface	Type of connection	M12 connector, 5 pin
4, 5 (voltage)	3, 4	Signal: D V +V +I -I Pin: 3 2 4 5

+V: Encoder power supply +V DC  
 D V: Encoder power supply ground GND (D V)  
 +I / -I: Voltage + / voltage -  
 +I / -I: Current + / current -

Top view of mating side, male contact base



M12 connector, 5-pin