

SENDIX M3658/3678 MAGNETYCZNY, JEDNOBROTOWY, CANOPEN, Ø36 MM

Enkodery jednoobrotowe absolutne magnetyczne

SERIE M3658



- Średnica zewnętrzna: Ø 36 mm
- Maks. średnica wałka: Ø 8 mm. Maks. średnica otworu: Ø 10 mm
- Maks. rozdzielczość: 14 bitów ST
- CANopen
- Obudowa: kompaktowa metalowa. Safety-Lockplus™ IP67/IP69K

OPIS PRODUKTU

Sendix M3658 / M3678 is a series of single-core magnet-encoded axial outputs with CANopen interface and a resolution of up to 14 bits. Thanks to the contactless technology, the sensor is very compact and robust. As this technique allows for complete encapsulation of the sensor part on the sensor, a high enclosure class, shock resistance and a wide temperature range can be achieved. The sensor is therefore very suitable for applications where extreme environments or temperatures can occur, such as mobile applications. It comes with either M12 or PUR cable as standard. Sendix M3658 / M3678 is also available in a salt water resistant version.

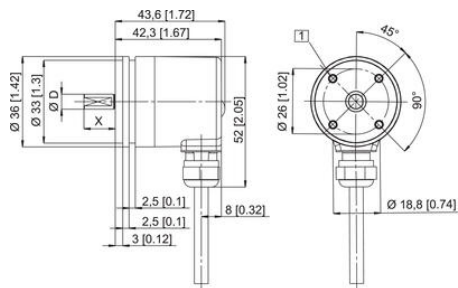
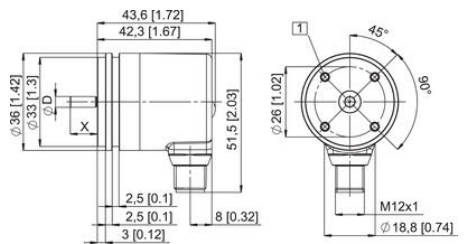
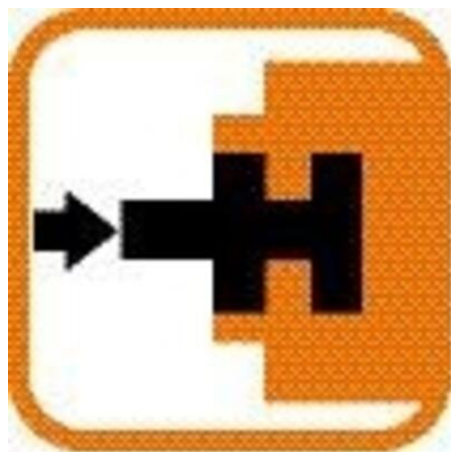
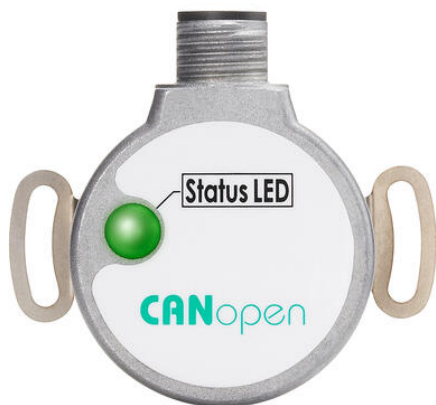
W celu określenia numeru katalogowego proszę o zapoznanie się z poniższymi informacjami.

| | | | | | | | | |
|---|--|---|---|--|--|-----------|----------|----------|
| Order code shaft version | 8.M3658 Type | 2 | X | C | X | 21 | 1 | X |
| a Flange 2 = synchro flange, ø 36 mm [1.42"] | b Shaft (ø x L), with flat 3 = ø 6 x 12.5 mm [0.24 x 0.49"] 6 = ø 8 x 12.5 mm [0.32 x 0.49"] 5 = ø 1/4" x 12.5 mm [0.49"] | c Interface / power supply C = CANopen DS301 V4.02 / 8 ... 30 V DC | d Type of connection 2 = radial cable, 1 m [3.28] PUR B = radial cable, special length PUR *) 4 = radial M12 connector, 5-pin *) Available special lengths (connection types B): 2, 3, 5, 8, 10, 15 m [6.56, 9.84, 16.40, 26.25, 32.80, 49.21'] order code expansion .XXXX = length in dm ex.: 8.M3658.23CB.2111.0030 (for cable length 3 m) | e Fieldbus profile 21 = CANopen | f Protection 1 = IP67 2 = IP69k Optional on request - Ex 2/22 (only for type of connection 4) - surface protection salt spray tested | | | |

| | | | | | | | | |
|---|--|---|--|--|--|-----------|----------|----------|
| Order code hollow shaft | 8.M3678 Type | X | X | C | X | 21 | 1 | X |
| a Flange 2 = with spring element, long 5 = with stator coupling, ø 46 mm [1.81"] | b Blind hollow shaft (insertion depth max. 18 mm [0.71"]) 2 = ø 6 mm [0.24"] 4 = ø 8 mm [0.32"] 6 = ø 10 mm [0.39"] 3 = ø 1/4" | c Interface / power supply C = CANopen DS301 V4.02 / 8 ... 30 V DC | d Type of connection 2 = radial cable, 1 m [3.28] PUR B = radial cable, special length PUR *) 4 = radial M12 connector, 5-pin *) Available special lengths (connection type B): 2, 3, 5, 8, 10, 15 m [6.56, 9.84, 16.40, 26.25, 32.80, 49.21'] order code expansion .XXXX = length in dm ex.: 8.M3678.52CB.2111.0030 (for cable length 3 m) | e Fieldbus profile 21 = CANopen | f Protection 1 = IP67 2 = IP69k Optional on request - Ex 2/22 (only for type of connection 4) - surface protection salt spray tested | | | |

SPECYFIKACJA TECHNICZNA

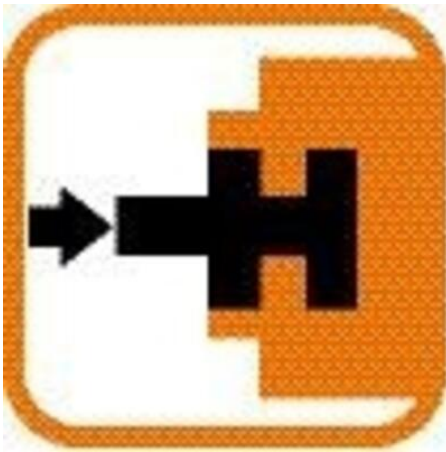
| | |
|----------------------------|-------------------|
| Max. temperatura pracy | 85 °C |
| Min. temperatura pracy | -40 °C |
| Montaż | Wał |
| Napięcie zasilania DC max. | 30 V DC |
| Napięcie zasilania DC min. | 8 V DC |
| Podłączenie | Kabel, Złącze M12 |
| Średnica obudowy | 36 mm |
| Średnica wału max | 8 mm |
| Średnica wału min | 6 mm |
| Stopień ochrony IP | IP67, IP69K |
| Typ czujnika | Absolutny |
| Wersja | Jednoobrotowy |
| Wyjście | CANopen |



| Interface | Type of connector | Cable (isolate unused wires individually before initial start-up) | Signal | V+ | 0V | CAN_GND | CAN_H | CAN_L |
|-----------|-------------------|---|--------|----|----|---------|-------|-------|
| C | 2, 8 | | | | | | | |
| | | Cable colour: | BN | WH | GY | GN | YE | |

| Interface | Type of connector | M12 connector, 5-pin | Signal | 0V | CAN_GND | CAN_H | CAN_L |
|-----------|-------------------|----------------------|--------|----|---------|-------|-------|
| C | 4 | | | | | | |
| | | Pin: | 2 | 3 | 1 | 4 | 5 |





| Interface | Type of connector | Cable (isolate unused wires individually before initial plug test) | | | | |
|-----------|-------------------|--|-----|---------|-------|-------|
| C | 2, B | +V | 0 V | CAN_GND | CAN_H | CAN_L |
| | | BN | WH | GY | GN | YE |
| Interface | Type of connector | M12 connector, 5-pin | | | | |
| C | 4 | +V | 0 V | CAN_GND | CAN_H | CAN_L |
| | | Pin: 2 | 3 | 1 | 4 | 5 |

Top view of mating side, male contact base



M12 connector, 5-pin