

## ZŁĄCZA KOŁNIERZOWE MULTI-GFP, WFP, FRM

5032.206.056

Złącze kolnierzowe GFP ID 56 czarny

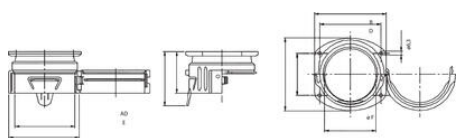


- Odporne na rozpuszczalniki
- Uszczelka dla podniesienie klasy IP
- Temp. pracy: od -40°C do +115°C
- Materiał: poliamid

### OPIS PRODUKTU

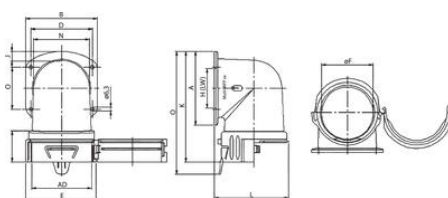
## SPECYFIKACJA TECHNICZNA

<b>Kolor</b>	Czarny
<b>Materiał</b>	Poliamid
<b>Max. temperatura pracy</b>	115 °C
<b>Min. temperatura pracy</b>	-40 °C
<b>Wymiar peszla AD</b>	56



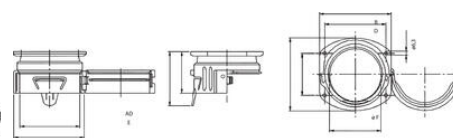
Multi-GFP

	AD	A	B	C	D	E	G	F
	mm	mm	mm	mm	mm	mm	mm	mm
5032.206.056	56	96,5	80,5	60,0	66,0	83,0	60,7	56
5032.206.070	70	94,0	96,0	60,5	80,5	96,4	65,5	68
5032.206.095	95	120,0	126,0	74,0	108,0	123,0	70,5	85



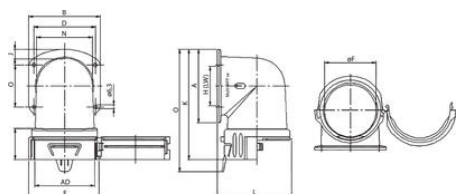
Multi-WFP

	AD	A	B	C	D	E	H	K	L	N	F
	mm	mm	mm	mm	mm	mm	mm	mm	mm	mm	mm
5032.207.070	70	94	96	60,5	80,5	96,4	70	153,0	105	73,0	68
5032.207.095	95	120	126	74,0	108,0	123,0	95	191,0	130	98,2	95



Multi-GFP

	AD	A	B	C	D	E	G	F
	mm	mm	mm	mm	mm	mm	mm	mm
5032.206.056	56	96,5	80,5	60,0	66,0	83,0	60,7	56
5032.206.070	70	94,0	96,0	60,5	80,5	96,4	65,5	68
5032.206.095	95	120,0	126,0	74,0	108,0	123,0	70,5	85



Multi-WFP

	AD	A	B	C	D	E	H	K	L	N	F
	mm	mm	mm	mm	mm	mm	mm	mm	mm	mm	mm
5032.207.070	70	94	96	60,5	80,5	96,4	70	153,0	105	73,0	68
5032.207.095	95	120	126	74,0	108,0	123,0	95	191,0	130	98,2	95