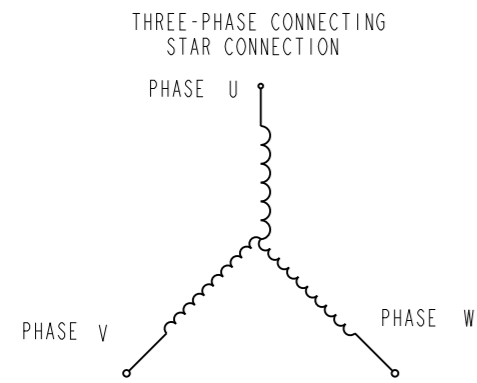
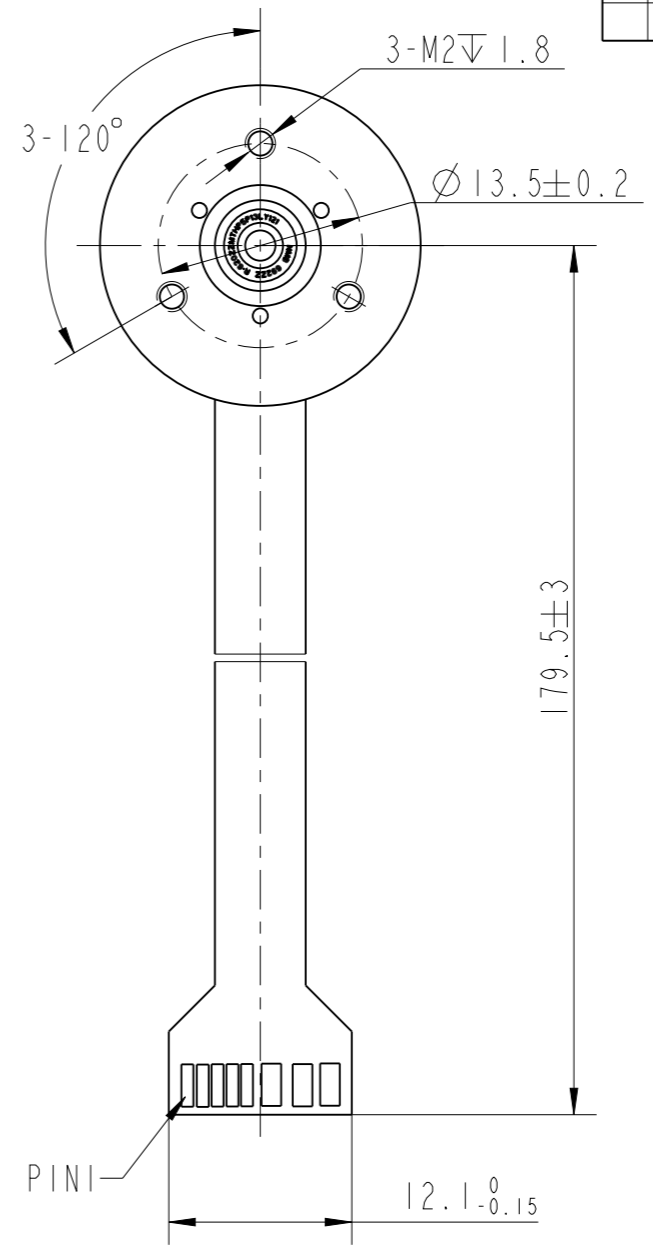
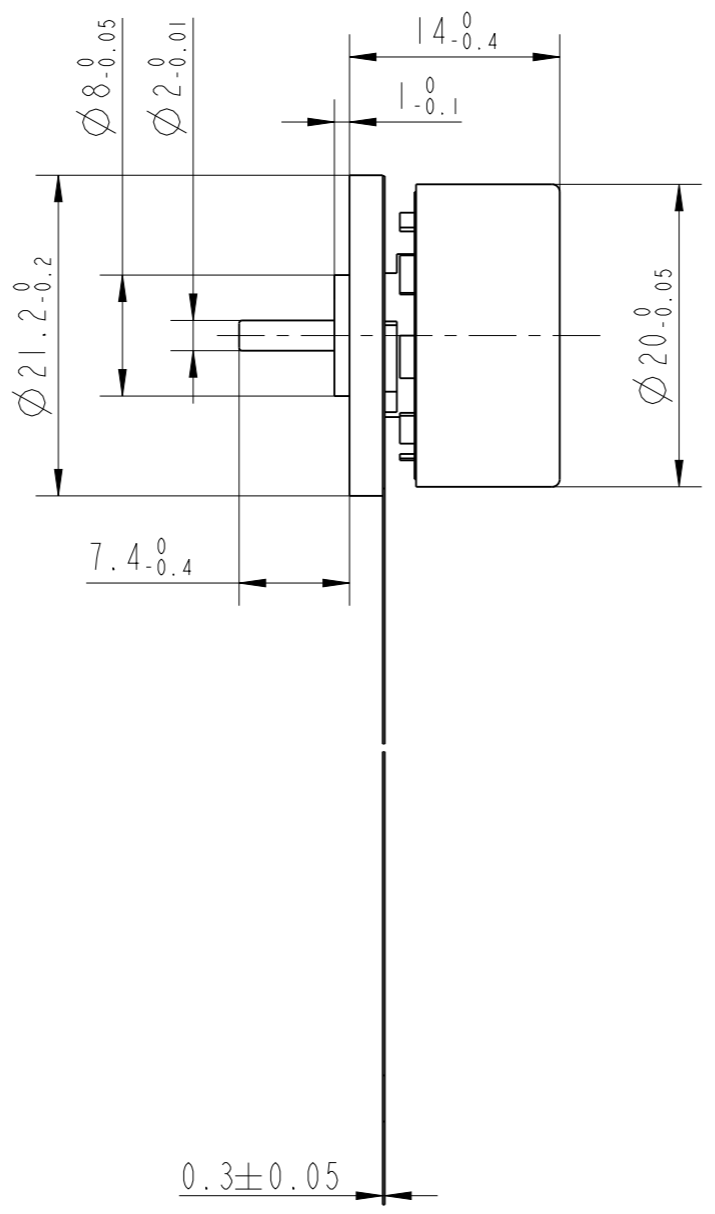
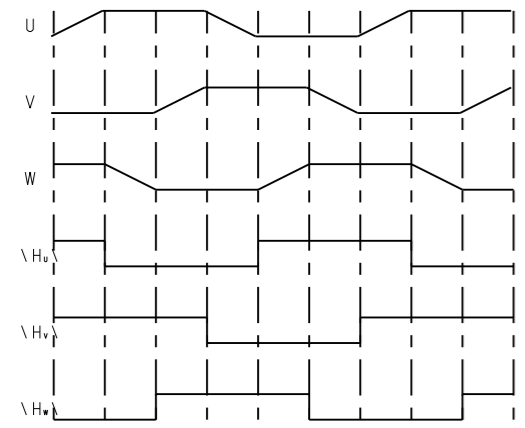


REV	ECN	NO	DESCRIPTION	DRN	APP'D	DATE



CW COMMUTATION
VIEWED FROM OUTPUT SHAFT



NUMBER OF PHASE	绕组相数	3	Wires for Phase				
NUMBER OF POLES	极数	8	PHASE U	PHASE V	PHASE W		
LINE TO LINE RESISTANCE	线电阻	7.2±10% ohms@20°C	PIN8	PIN7	PIN6		
LINE TO LINE INDUCTANCE	线电感	0.62±20% mH@1kHz	Wires for Hall				
NOMINAL VOLTAGE	额定电压	12 VDC	HALL V _c	H _u	H _v	H _w	HALL G _{nd}
NO LOAD SPEED	空载转速	9530±10% RPM	PIN1	PIN3	PIN4	PIN2	PIN5
NO LOAD CURRENT	空载电流	0.23 A	PERMISSIBLE RADIAL+AXIAL FORCE				
RATED TORQUE	额定转矩	7.59 mN.m					
RATED SPEED	额定转速	5170 RPM					
RATED CURRENT	额定电流	0.63 A					
PEAK TORQUE	峰值转矩	19 mN.m					
PEAK CURRENT	峰值电流	1.62 A					
BACK EMF CONSTANT	反电势常数	0.89±10% V _{rms} /krPM					
TORQUE CONSTANT	转矩常数	12 mN.m/A					
INSULATION CLASS	绝缘等级	B 130°C					
DIELECTRIC STRENG	介电强度	600VAC ISEC					
INSULATION RESIST	绝缘电阻	100MΩm @500VDC	DISTANCE	距离	a=5 mm		
ROTOR INERTIA	转子转动惯量	5.1g.cm ²	RADIAL-FORCE	径向压力	F _r =5.3 N Max		
WEIGHT	重量	23 g	SHAFT RADIAL PLAY	径向间隙	0.02mm Max. @4N		
OPERATION AMBIENT	使用环境	Ambient temperature:-20...+50°C, humidity Max.85%(No condensation)	SHAFT AXIAL PLAY	轴向间隙	0.14mm Max. @4N		
STORAGE AMBIENT	存储环境	Ambient temperature:-20...+80°C, humidity Max.85%(No condensation)					

REV	ECN NO.	DESCRIPTION	DESIGN	DATE	P/N.
UNLESS OTHERWISE SPECIFIED TOLERANCES:		MATERIAL	CONTR.	CHECK	TITLE
DECIMALS: .X ±0.5 .XX ±0.25 .XXX ±0.1		FIRST ANGLE PROJECTION		SCALE 2:1	电机
ANGULAR: ±0°30'		DO NOT SCALE DRAWING		SHEET 1 OF 1	USED ON
					FL20BLW14-12V-5105A
					DWG NO.
					REV A
					FULLING MOTOR